

Introducción a la programación de APPs

Aula de informática
Colegio Claret

Introducción a la programación de APPs

Aula de informática
Colegio Claret


CONECTAR CON EL SITIO WEB

Aula de informática
Colegio Claret



Una cuenta. Todo Google.

Inicia sesión con tu cuenta de Google



 No cerrar sesión [¿Necesitas ayuda?](#)

[Crear una cuenta](#)

Una sola cuenta de Google para todos los servicios de Google



Google cuentas

La aplicación MIT AppInventor Version 2 solicita autorización para acceder a su cuenta de Google.

Seleccione la cuenta que desea utilizar.

colegioclaretdonbenito@gmail.com

Google no está afiliado al contenido de MIT AppInventor Version 2 ni a sus propietarios. Si accedes a tu cuenta, Google compartirá tu dirección de correo electrónico con MIT AppInventor Version 2, pero no compartirá ni la contraseña ni los datos personales.

[Accede a otra cuenta](#)

Recordar esta aprobación durante los próximos 30 días

©2011 Google - [Página principal](#) - [Condiciones del servicio](#) - [Política de privacidad](#) - [Ayuda](#)



MIT App Inventor 2

ai2.appinventor.mit.edu

Google

MIT App Inventor 2 Beta

Project Connect Build Help My Projects Guide Report an Issue colegioclairetonbenito@gmail.com

New Project Delete Project

Projects

Name	Date Created	Date Modified
------	--------------	---------------

Welcome to App Inventor!

Please fill out a short **voluntary survey** so that we can learn more about our users and improve MIT App Inventor.

Take Survey Now Take Survey Later Never Take Survey

[Privacy Policy and Terms of Use](#)

Parece que no ha iniciado Firefox desde hace tiempo. ¿Quiere limpiarlo para comenzar una experiencia renovada? ¡A propósito, bienvenido de nuevo!

Reinicializar Firefox...

8:22 01/09/2014

MIT App Inventor 2

ai2.appinventor.mit.edu

Google

MIT App Inventor 2
Beta

Project Connect Build Help My Projects Guide Report an Issue colegioclairetonbenito@gmail.com

New Project Delete Project

Projects

Name	Date Created
------	--------------

Welcome to App Inventor!

Welcome to MIT App Inventor 2

Got an Android phone or tablet? Find out how to [Set up and connect an Android device.](#)

Don't have an Android device? Find out how to [Set up and run the Android emulator.](#)

(Emulator and USB connections are currently for Mac and Windows only. Support for Linux is *coming soon!*)
(Support for Internet Explorer is *coming soon!*)

Continue

[Privacy Policy and Terms of Use](#)

Parece que no ha iniciado Firefox desde hace tiempo. ¿Quiere limpiarlo para comenzar una experiencia renovada? ¡A propósito, bienvenido de nuevo!

Reinicializar Firefox...

Windows Taskbar: Internet Explorer, Firefox, Zynga, etc.

System Tray: ES, 8:22, 01/09/2014

INSTALAR EL EMULADOR

Aula de informática
Colegio Claret

MIT App Inventor 2 x Installing App Inventor 2 S...

appinventor.mit.edu/explore/ai2/windows.html

You must perform the installation from an account that has administrator privileges. Installing via a non-administrator account is currently not supported.

If you have installed a previous version of the App Inventor 2 setup tools, you will need to uninstall them before installing the latest version. Follow the instructions at [How to Update the App Inventor Setup Software](#).

1. [Download the installer.](#)
2. Locate the file **AppInventor_Setup_Installer_v_2_1.exe** (~101 MB) in your Downloads file or your Desktop. The location of the download on your computer depends on how your browser is configured.
3. Open the file.
4. Click through the steps of the installer. Do not change the installation location but record the installation directory, because you might need it to install drivers later. The directory will differ depending on your version of Windows and whether or not you are logged in as an administrator.
5. You may be asked if you want to allow a program from an **unknown publisher** to make changes to this computer. **Click yes.**

User Account Control

Do you want to allow the following program from an unknown publisher to make changes to this computer?

Program name: AppInventor_Setup_Installer_v_2_0.exe
Publisher: Unknown
File origin: Downloaded from the Internet

Show details Yes No

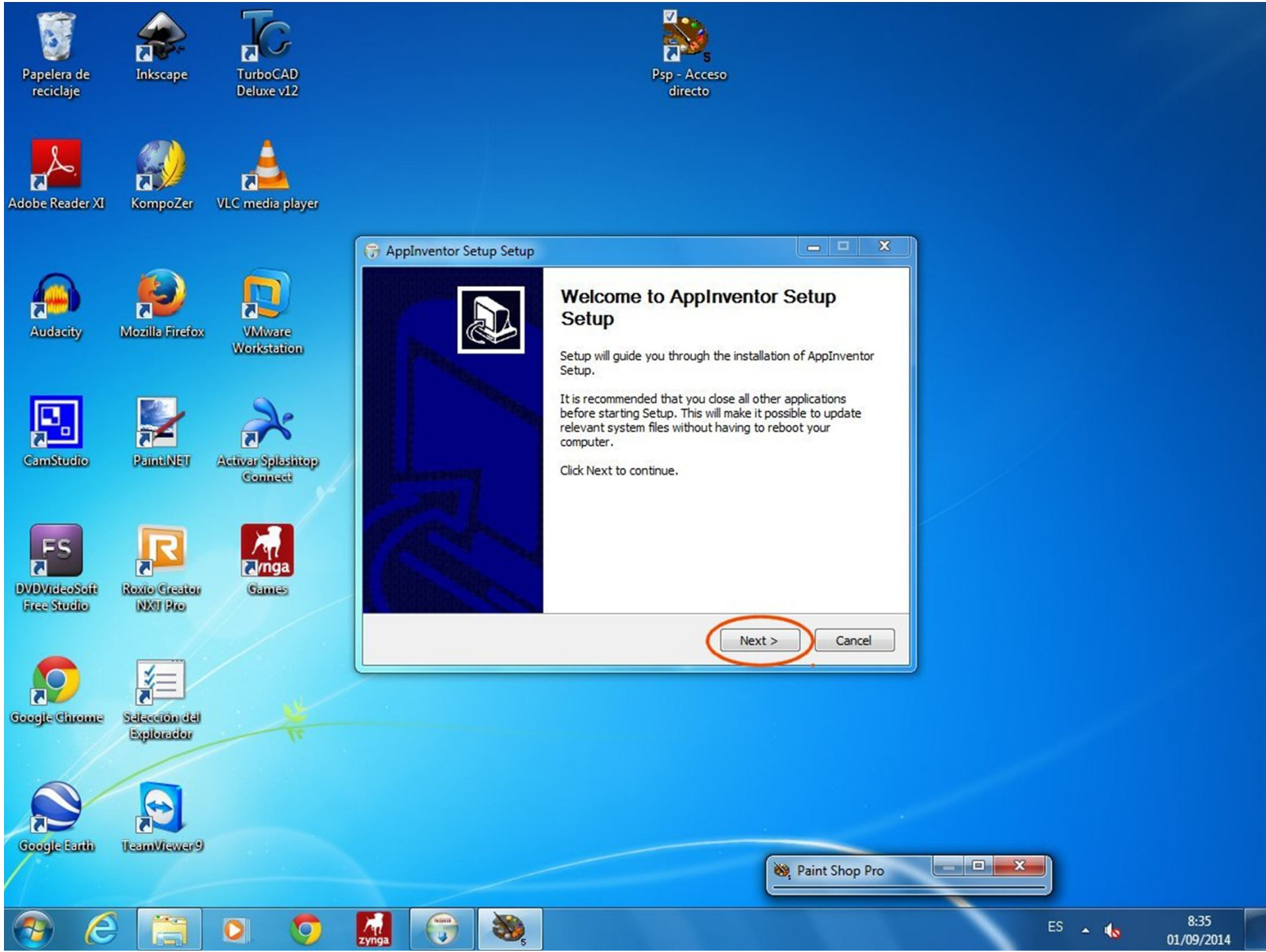
[Change when these notifications appear](#)

Locating the Setup software

Tomás Mendoza Mateos Descargas

Nombre	Fecha de modifica...	Tipo
2750516	02/04/2014 10:50	Documen
2771716	11/03/2014 8:29	Documen
AppInventor_Setup_Installer_v_2_2	01/09/2014 8:30	Aplicació

8:30
01/09/2014



Papelera de reciclaje

Inkscape

TurboCAD Deluxe v12

Psp - Acceso directo

Adobe Reader XI

KompoZer

VLC media player

Audacity

Mozilla Firefox

VMware Workstation

CamStudio

PaintiNET

Activar Splashtop Connect

DVDVideoSoft Free Studio

Roxio Creator NXT Pro

zynga Games

Google Chrome

Selección del Explorador

Google Earth

TeamViewer9

AppInventor Setup Setup

Welcome to AppInventor Setup Setup

Setup will guide you through the installation of AppInventor Setup.

It is recommended that you close all other applications before starting Setup. This will make it possible to update relevant system files without having to reboot your computer.

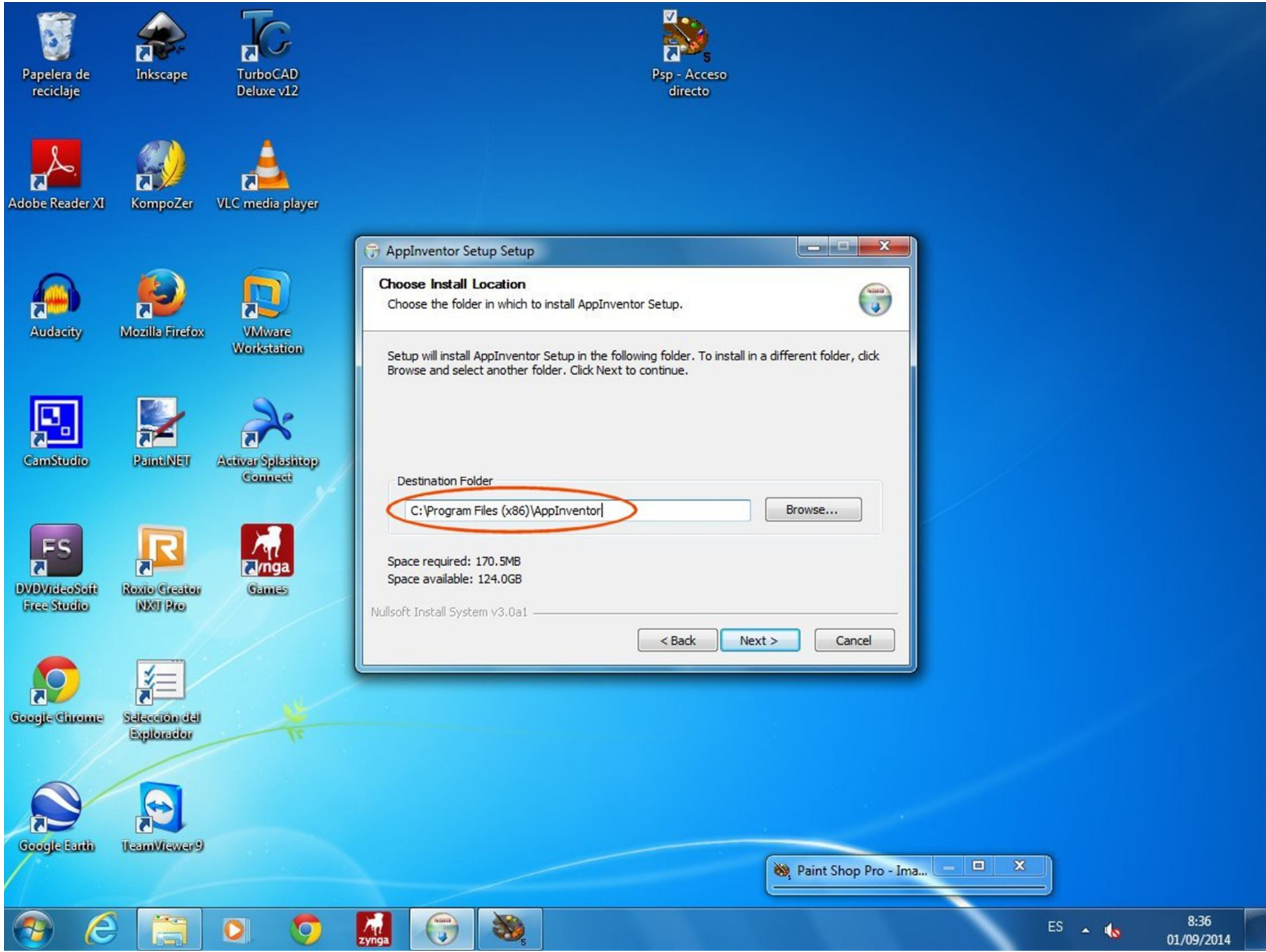
Click Next to continue.

Next > Cancel

Paint Shop Pro



ES 8:35 01/09/2014



AppInventor Setup Setup

Choose Install Location
Choose the folder in which to install AppInventor Setup.

Setup will install AppInventor Setup in the following folder. To install in a different folder, click Browse and select another folder. Click Next to continue.

Destination Folder

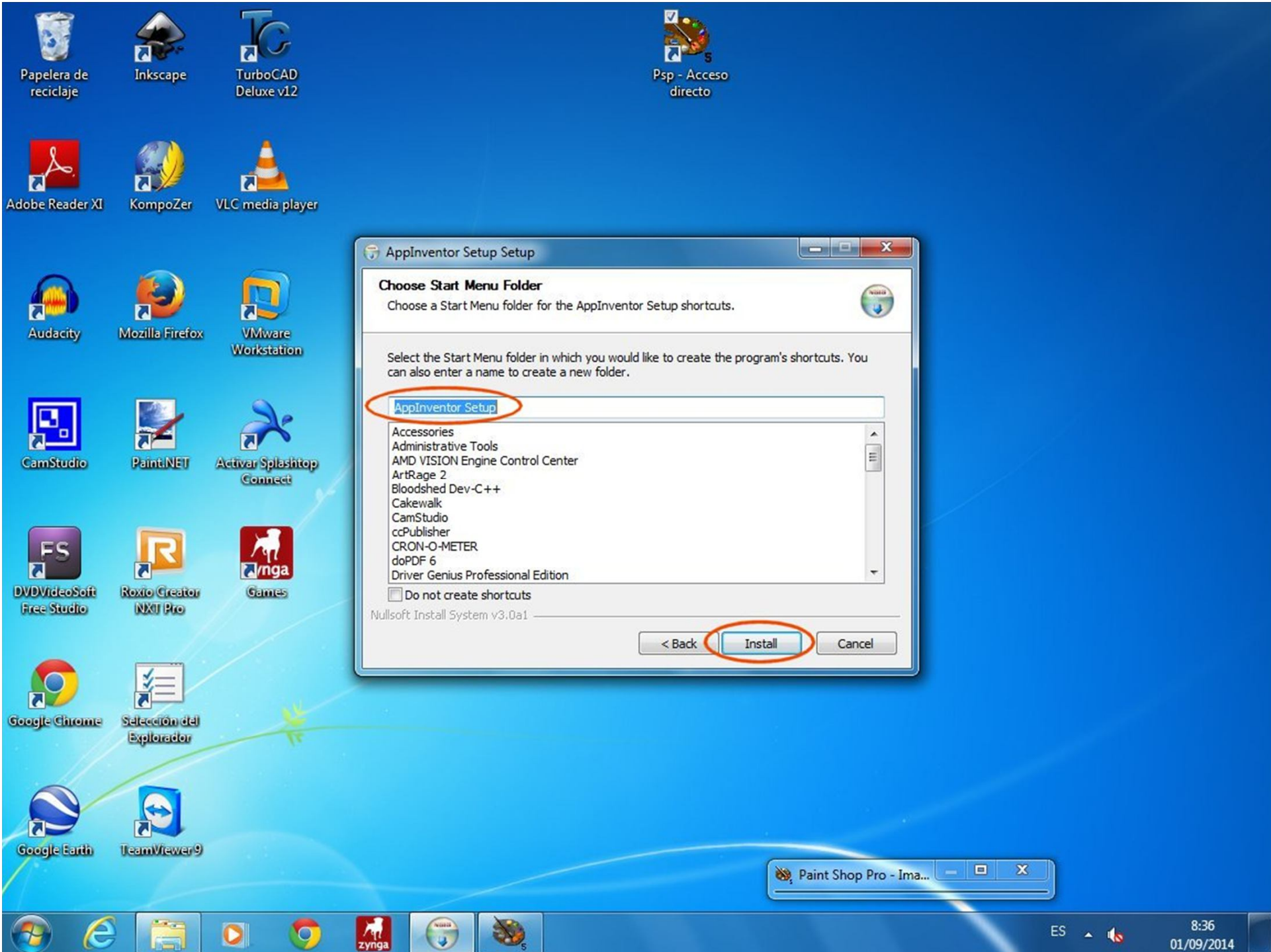
Space required: 170.5MB
 Space available: 124.0GB

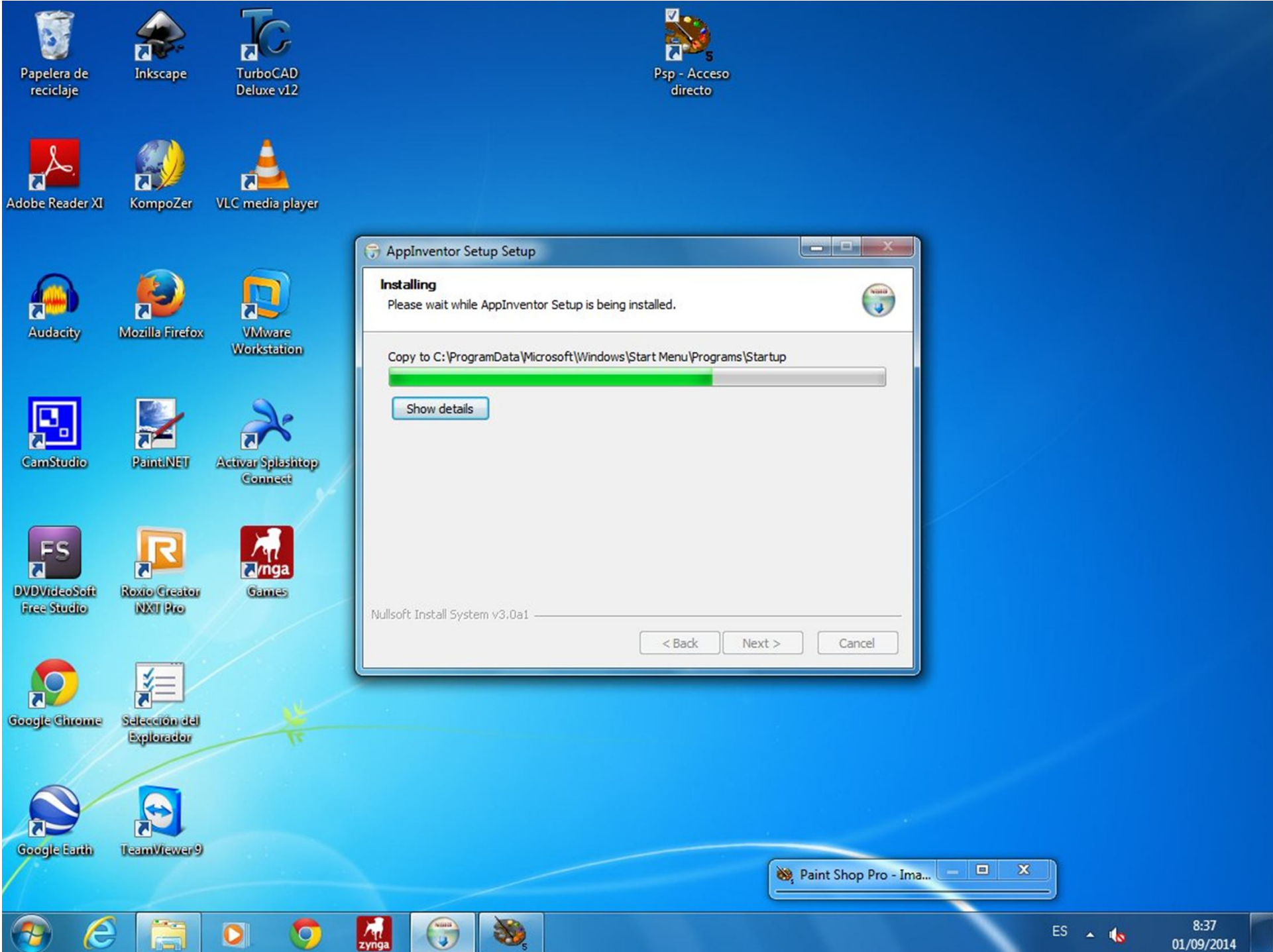
Nullsoft Install System v3.0a1

< Back Next > Cancel

- Papelera de reciclaje
- Inkscape
- TurboCAD Deluxe v12
- Psp - Acceso directo
- Adobe Reader XI
- KompoZer
- VLC media player
- Audacity
- Mozilla Firefox
- VMware Workstation
- CamStudio
- PaintiNET
- Activar Splashtop Connect
- DVDVideoSoft Free Studio
- Roxio Creator NXT Pro
- zynga Games
- Google Chrome
- Selección del Explorador
- Google Earth
- TeamViewer9

Paint Shop Pro - Im... [min] [max] [close]





AppInventor Setup Setup

Installing

Please wait while AppInventor Setup is being installed.

Copy to C:\ProgramData\Microsoft\Windows\Start Menu\Programs\Startup

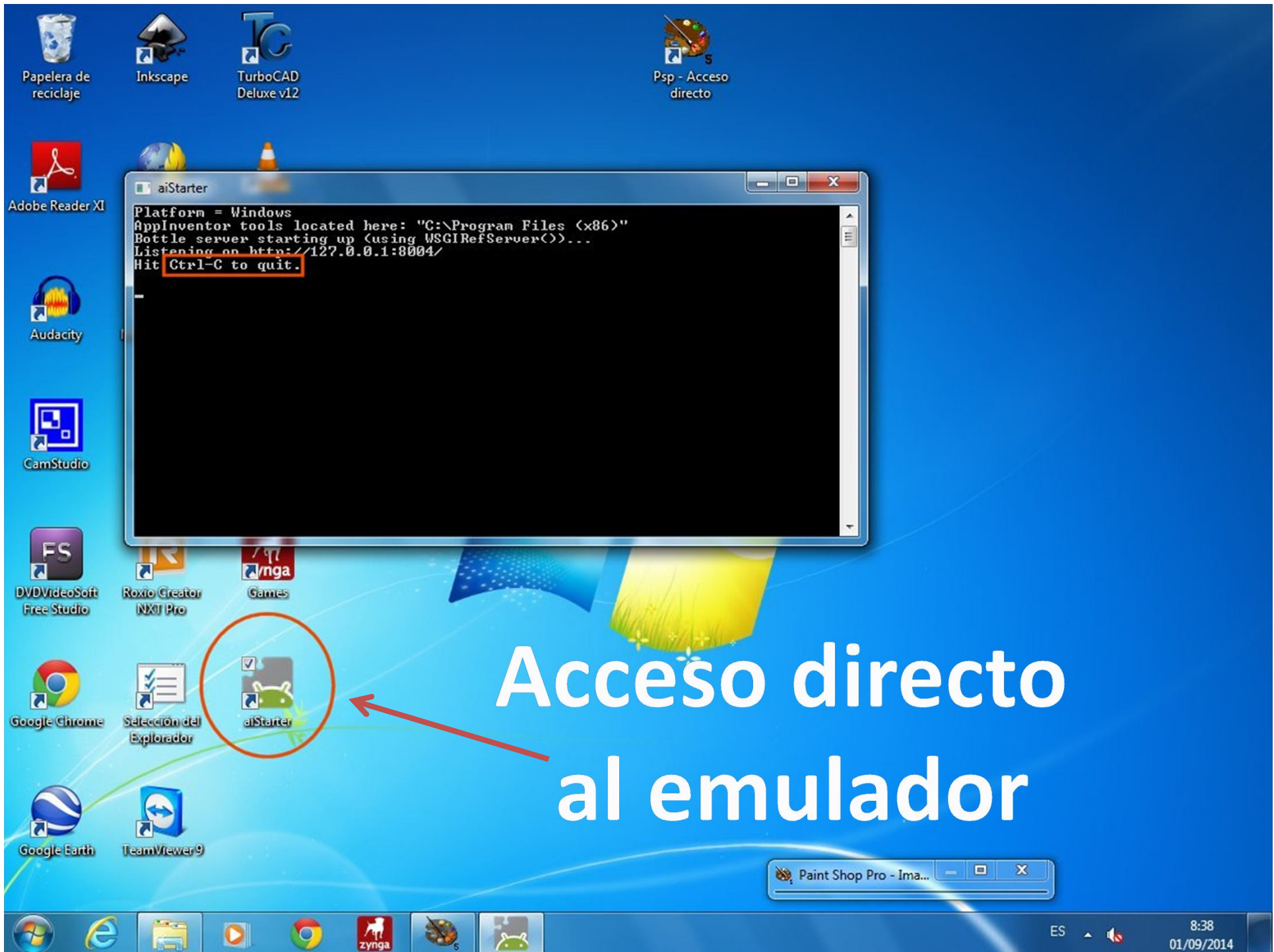
Show details

< Back Next > Cancel

Nullsoft Install System v3.0a1

Paint Shop Pro - Ima...





Acceso directo
al emulador

DISEÑAR LA APP

Aula de informática
Colegio Claret

MIT App Inventor 2 x Installing and Running the ... x

ai2.appinventor.mit.edu

MIT App Inventor 2 Beta

Project Connect Build Help My Projects Guide Report an Issue colegioclairetdonbenito@gmail.com

New Project Delete Project

Projects

Name	Date Created	Date Modified
------	--------------	---------------

Create new App Inventor project

Project name:

Cancel OK

CREAR UNA NUEVA APP

[Privacy Policy and Terms of Use](#)

FS

DVDVideoSoft Free Studio

INFORMATICA

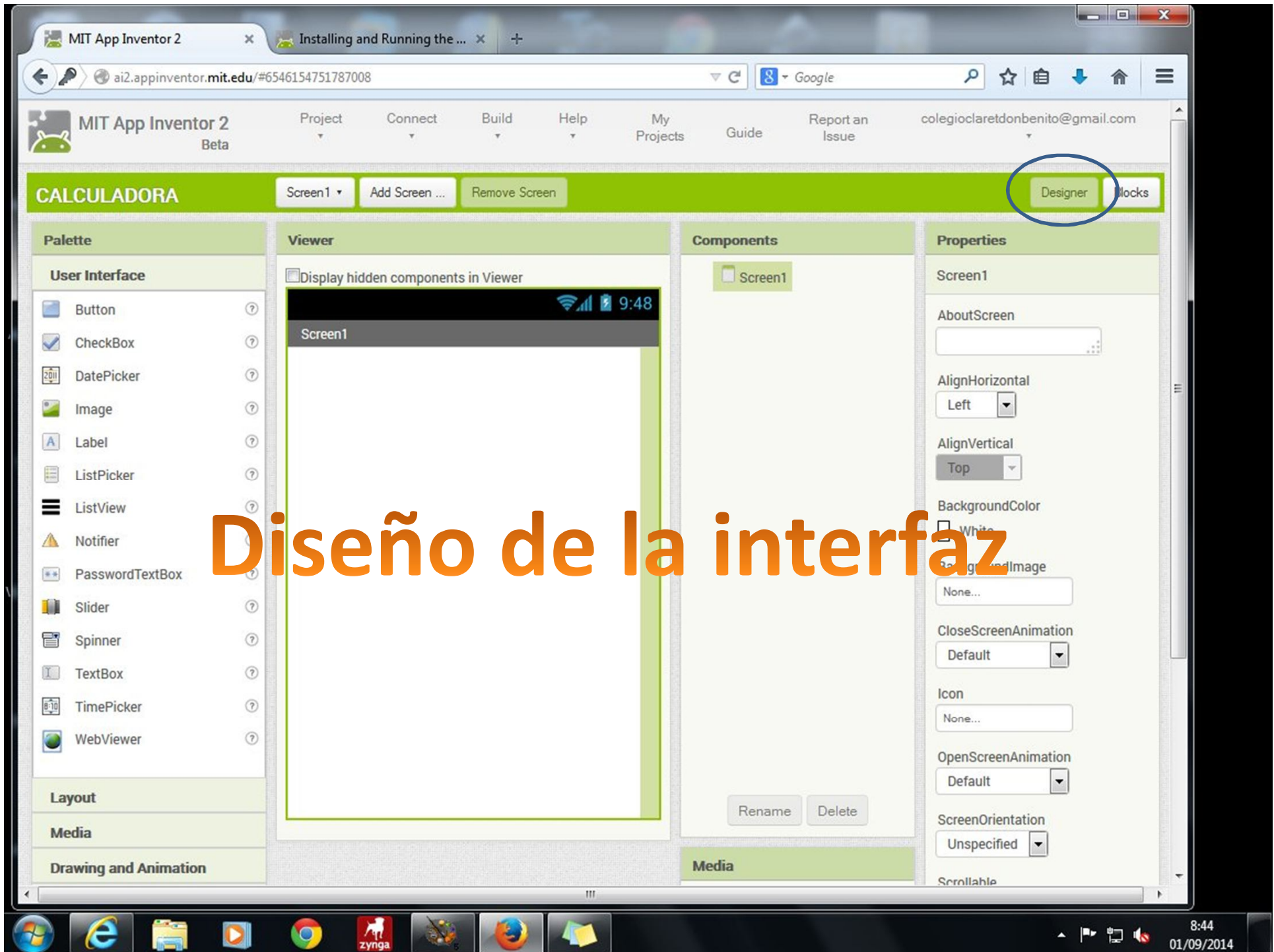
CONTROL (ONFRAGUE-...

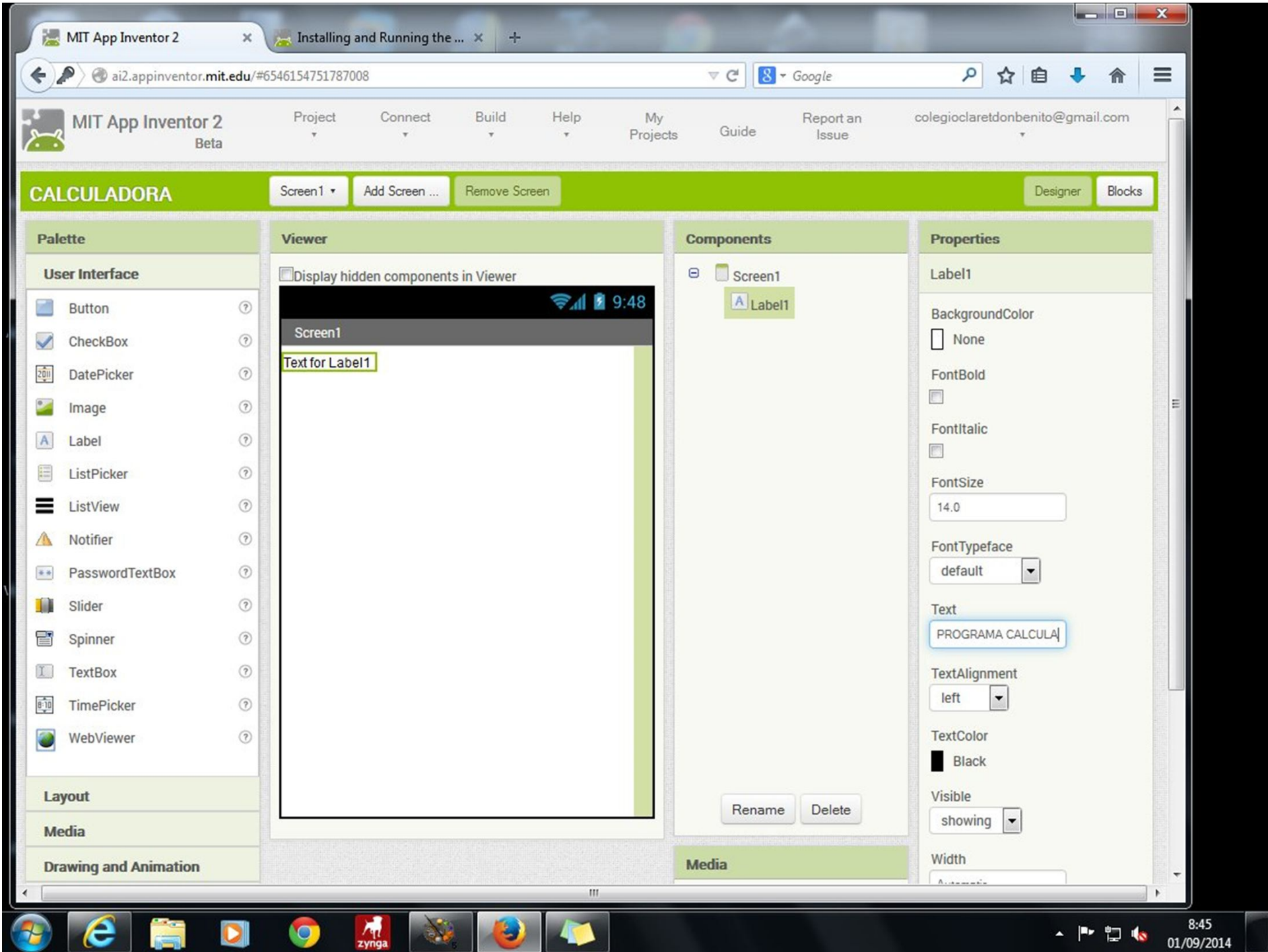
CONTROL_WE...

APPINVENTOR

Taskbar icons: Internet Explorer, File Explorer, Windows Media Center, Google Chrome, Zynga, Firefox, Start menu

System tray: 8:43, 01/09/2014





MIT App Inventor 2

ai2.appinventor.mit.edu/#6546154751787008

CALCULADORA

Screen1 Add Screen ... Remove Screen Designer Blocks

Palette

User Interface

- Button
- CheckBox
- DatePicker
- Image
- Label
- ListPicker
- ListView
- Notifier
- PasswordTextBox
- Slider
- Spinner
- TextBox
- TimePicker
- WebView

Layout

Media

Drawing and Animation

Sensors

Social

Viewer

Display hidden components in Viewer

Screen1

PROGRAMA CALCULADORA

Introduce un número

introduce otro número

SUMAR

Components

- Screen1
 - Label1
 - Label2
 - TextBox1
 - Label3
 - TextBox2
 - Button1

Properties

Label2

BackgroundColor: None

FontBold:

FontItalic:

FontSize: 14.0

FontTypeface: default

Text: Introduce un número

TextAlignment: left

TextColor: Black

Visible: showing

Width: Automatic...

Height: ...

Rename Delete

Media

Upload File ...

Botón de comando

Cajas de texto para introducir datos

Aquí se modifica el contenido de la etiqueta

MIT App Inventor 2

Installing and Running the ...

ai2.appinventor.mit.edu/#6546154751787008

Google

MIT App Inventor 2 Beta

Project Connect Build Help My Projects Guide Report an Issue colegioclaretndonbenito@gmail.com

CALCULADORA

Screen1 Add Screen ... Remove Screen Designer **Blocks**

Bloques de código

Blocks

- Built-in
 - Control
 - Logic
 - Math
 - Text
 - Lists
 - Colors
 - Variables
 - Procedures
- Screen1
 - Label1
 - Label2
 - TextBox1
 - Label3
 - TextBox2
 - Button1
- Any component

Rename Delete

Viewer

when Button1 .Click do

when Button1 .GotFocus do

when Button1 .LongClick do

when Button1 .LostFocus do

when Button1 .TouchDown do

when Button1 .TouchUp do

Button1 BackgroundColor

set Button1 BackgroundColor to

8:55 01/09/2014

MIT App Inventor 2

ai2.appinventor.mit.edu/#6546154751787008

MIT App Inventor 2 Beta

Project Connect Build Help My Projects Guide Report an Issue colegioclairetdonbenito@gmail.com

CALCULADORA

Screen1 Add Screen ... Remove Screen Designer Blocks

Blocks

- Built-in
 - Control
 - Logic
 - Math
 - Text
 - Lists
 - Colors
 - Variables
 - Procedures
- Screen1
 - Label1
 - Label2
 - TextBox1
 - Label3
 - TextBox2
 - Button1
- Any component

Rename Delete

Viewer

```
initialize global name to name to  
get  
when Button1 Click  
set to  
initialize local name to  
in  
initialize local name to  
in
```

CREAR VARIABLES

Show Warnings

8:57 01/09/2014

MIT App Inventor 2

ai2.appinventor.mit.edu/#6546154751787008

MIT App Inventor 2 Beta

Project Connect Build Help My Projects Guide Report an Issue colegioclaretndonbenito@gmail.com

CALCULADORA

Screen1 Add Screen ... Remove Screen Designer Blocks

Blocks

- Built-in
 - Control
 - Logic
 - Math
 - Text
 - Lists
 - Colors
 - Variables
 - Procedures
- Screen1
 - Label1
 - Label2
 - TextBox1
 - Label3
 - TextBox2
 - Button1
- Any component

Rename Delete

Viewer

0 initialize global name to

Button1 Click

+ - × / ^

random integer from 1 to 100

random fraction

random set seed to

Show Warnings

min

Operaciones numéricas

8:57 01/09/2014

MIT App Inventor 2

ai2.appinventor.mit.edu/#6546154751787008

MIT App Inventor 2 Beta

Project Connect Build Help My Projects Guide Report an Issue colegioclaretndonbenito@gmail.com

CALCULADORA

Screen1 Add Screen ... Remove Screen Designer Blocks

Blocks

- Built-in
 - Control
 - Logic
 - Math
 - Text
 - Lists
 - Colors
 - Variables
 - Procedures
- Screen1
 - Label1
 - Label2
 - TextBox1
 - Label3
 - TextBox2
 - Button1
- Any component

Rename Delete

Media

Upload File

Viewer

```
initialize global suma to 0
```

```
when Button1 .Click do
```

Código Asociado al botón

Show Warnings

8:59 01/09/2014

MIT App Inventor 2

ai2.appinventor.mit.edu/#6546154751787008

MIT App Inventor 2 Beta

Project Connect Build Help My Projects Guide Report an Issue colegioclairetdonbenito@gmail.com

CALCULADORA

Screen1 Add Screen ... Remove Screen Designer Blocks

Blocks

- Built-in
 - Control
 - Logic
 - Math
 - Text
 - Lists
 - Colors
 - Variables
 - Procedures
- Screen1
 - Label1
 - Label2
 - TextBox1
 - Label3
 - TextBox2
 - Button1
- Any component

Rename Delete

Media

Upload File

Viewer

```
initialize global suma to 0
initialize global valor1 to 0
initialize global valor2 to 0
when Button1 .Click
do set to
  global suma
  global valor1
  global valor2
```

0 1 Show Warnings

9:00 01/09/2014

MIT App Inventor 2

ai2.appinventor.mit.edu/#6546154751787008

MIT App Inventor 2 Beta

Project Connect Build Help My Projects Guide Report an Issue colegioclairetdonbenito@gmail.com

CALCULADORA

Screen1 Add Screen ... Remove Screen Designer Blocks

Blocks

- Built-in
 - Control
 - Logic
 - Math
 - Text
 - Lists
 - Colors
 - Variables
 - Procedures
- Screen1
 - Label1
 - Label2
 - TextBox1
 - Label3
 - TextBox2
 - Button1
- Any component

Rename Delete

Media

Upload File

Viewer

```
initialize global suma to 0
initialize global valor1 to 0
initialize global valor2 to 0

when Button1 .Click
do set global suma to get global valor1 + get global valor2
```

global suma
global valor1
global valor2

Sumar el contenido de las variables

Show Warnings

9:01 01/09/2014

MIT App Inventor 2

ai2.appinventor.mit.edu/#6546154751787008

MIT App Inventor 2 Beta

Project Connect Build Help My Projects Guide Report an Issue colegioclairetdonbenito@gmail.com

CALCULADORA

Screen1 Add Screen ... Remove Screen Designer Blocks

Blocks

- Built-in
 - Control
 - Logic
 - Math
 - Text
 - Lists
 - Colors
 - Variables
 - Procedures
- Screen1
 - Label1
 - Label2
 - TextBox1
 - Label3
 - TextBox2
 - Button1
 - Label4
- Any component

Rename Delete

Media

Viewer

set Label4 . FontSize to

Label4 . Height

set Label4 . Height to

Label4 . Text

set Label4 . Text to

Label4 . TextColor

set Label4 . TextColor to

Label4 . Visible

set Label4 . Visible to

Label4 . Width

set Label4 . Width to

Label4

get global valor1 + get global valor2

Mostrar el Contenido de La variable En una etiqueta

MIT App Inventor 2

ai2.appinventor.mit.edu/#6546154751787008

MIT App Inventor 2 Beta

Project Connect Build Help My Projects Guide Report an Issue colegioclairetdonbenito@gmail.com

CALCULADORA

Screen1 Add Screen ... Remove Screen Designer Blocks

Blocks

- Built-in
 - Control
 - Logic
 - Math
 - Text
 - Lists
 - Colors
 - Variables**
 - Procedures
- Screen1
 - Label1
 - Label2
 - TextBox1
 - Label3
 - TextBox2
 - Button1
 - Label4
- Any component

Rename Delete

Media

Upload File

Viewer

```
initialize global suma to 0
initialize global valor1 to 0
initialize global valor2 to 0

when Button1 .Click
do
  set global suma to get global valor1 + get global valor2
  set Label4 .Text to get global suma
```

Show Warnings

9:03 01/09/2014

Mostrar el Contenido de La variable En una etiqueta

EJECUTAR EL EMULADOR

Aula de informática
Colegio Claret

MIT App Inventor 2

ai2.appinventor.mit.edu/#6546154751787008

MIT App Inventor 2 Beta

Project Connect Build Help My Projects Guide Report an Issue colegioclaretndonbenito@gmail.com

CALCULADORA

Screen 1

Designer Blocks

Blocks

- Built-in
 - Control
 - Logic
 - Math
 - Text
 - Lists
 - Colors
 - Variables**
 - Procedures
- Screen 1
 - Label1
 - Label2
 - TextBox1
 - Label3
 - TextBox2
 - Button1
 - Label4
- Any component

Rename Delete

Media

Upload File

AI Companion

Emulator

USB

Reset Connection

Hard Reset

global suma to 0

initialize global valor1 to 0

initialize global valor2 to 0

when Button1 .Click

do

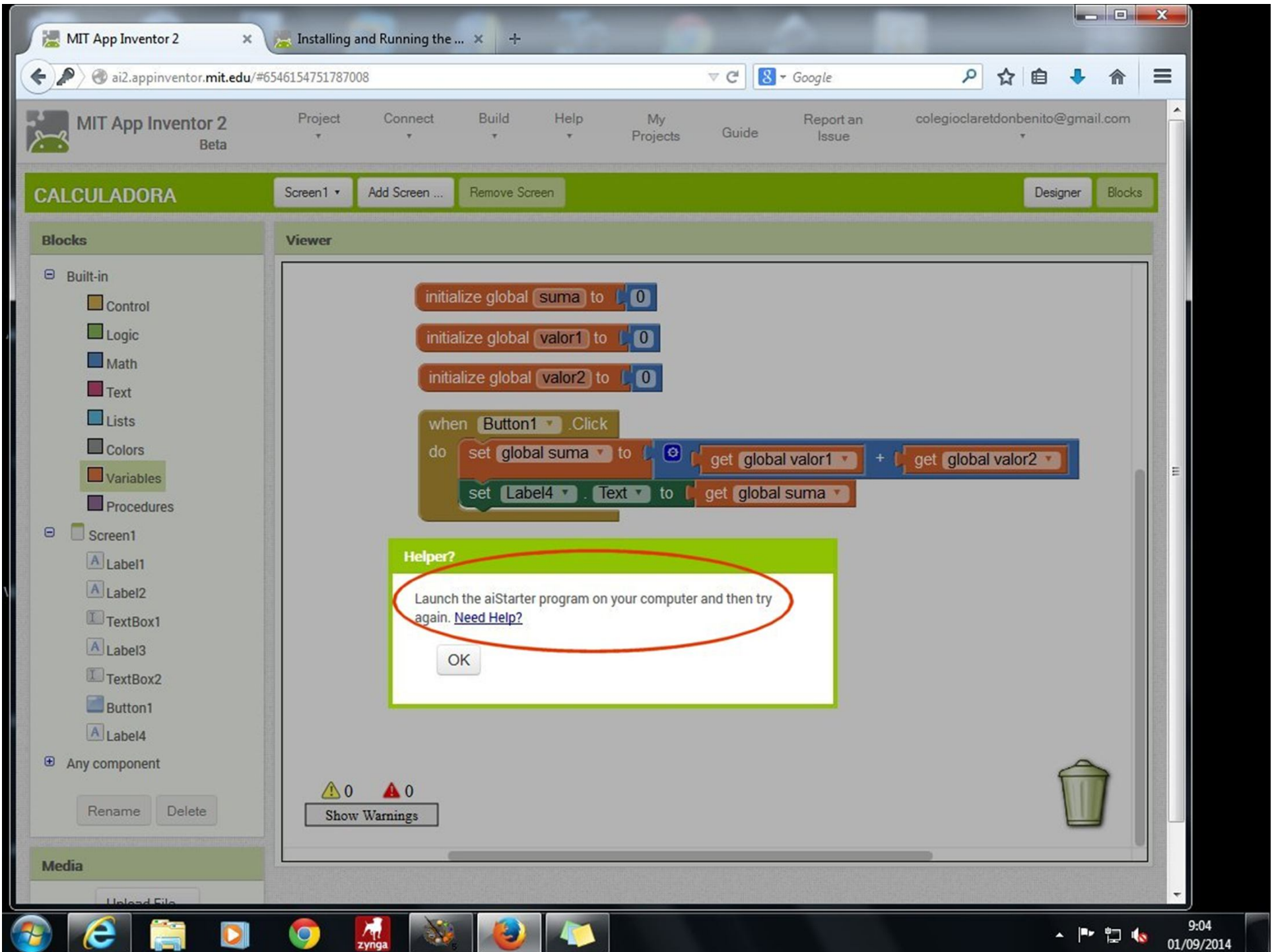
set global suma to get global valor1 + get global valor2

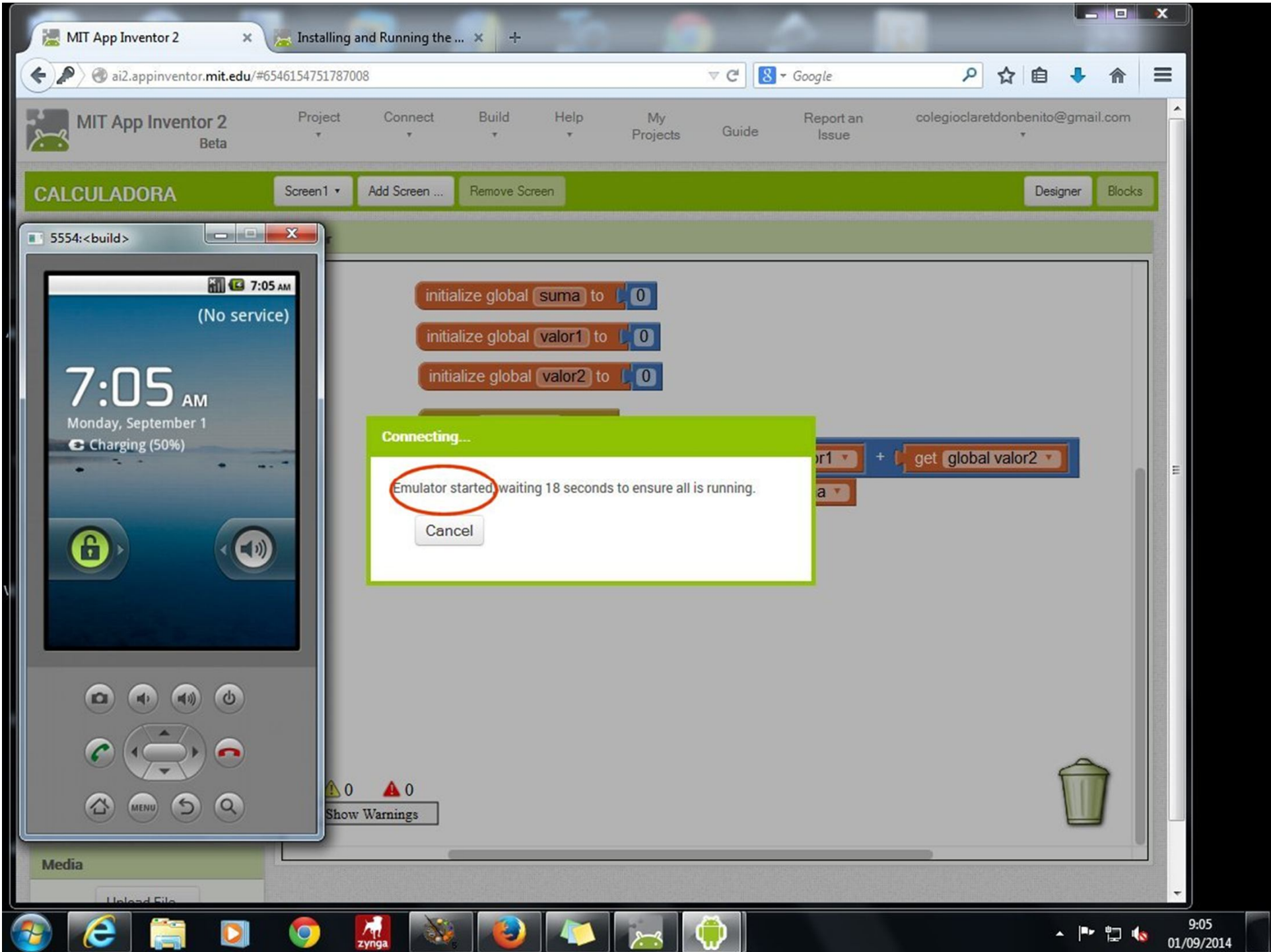
set Label4 .Text to get global suma

Ejecutar el emulador

Show Warnings

9:04 01/09/2014





MIT App Inventor 2

ai2.appinventor.mit.edu/#6546154751787008

MIT App Inventor 2 Beta

Project Connect Build Help My Projects Guide Report an Issue colegioclairetdonbenito@gmail.com

CALCULADORA

Screen1 Add Screen ... Remove Screen Designer Blocks

5554:<build>

MIT App Inventor 2 Companion

MIT App Inventor 2

Running in the emulator, waiting to get blocks...

Version: 2.11aI2

initialize global suma to 0

initialize global valor1 to 0

initialize global valor2 to 0

Companion Version Check

Your Companion App is out of date. Click "OK" to start the update. Watch your emulator's screen because you will be asked to approve the update.

OK Not Now

get global valor2

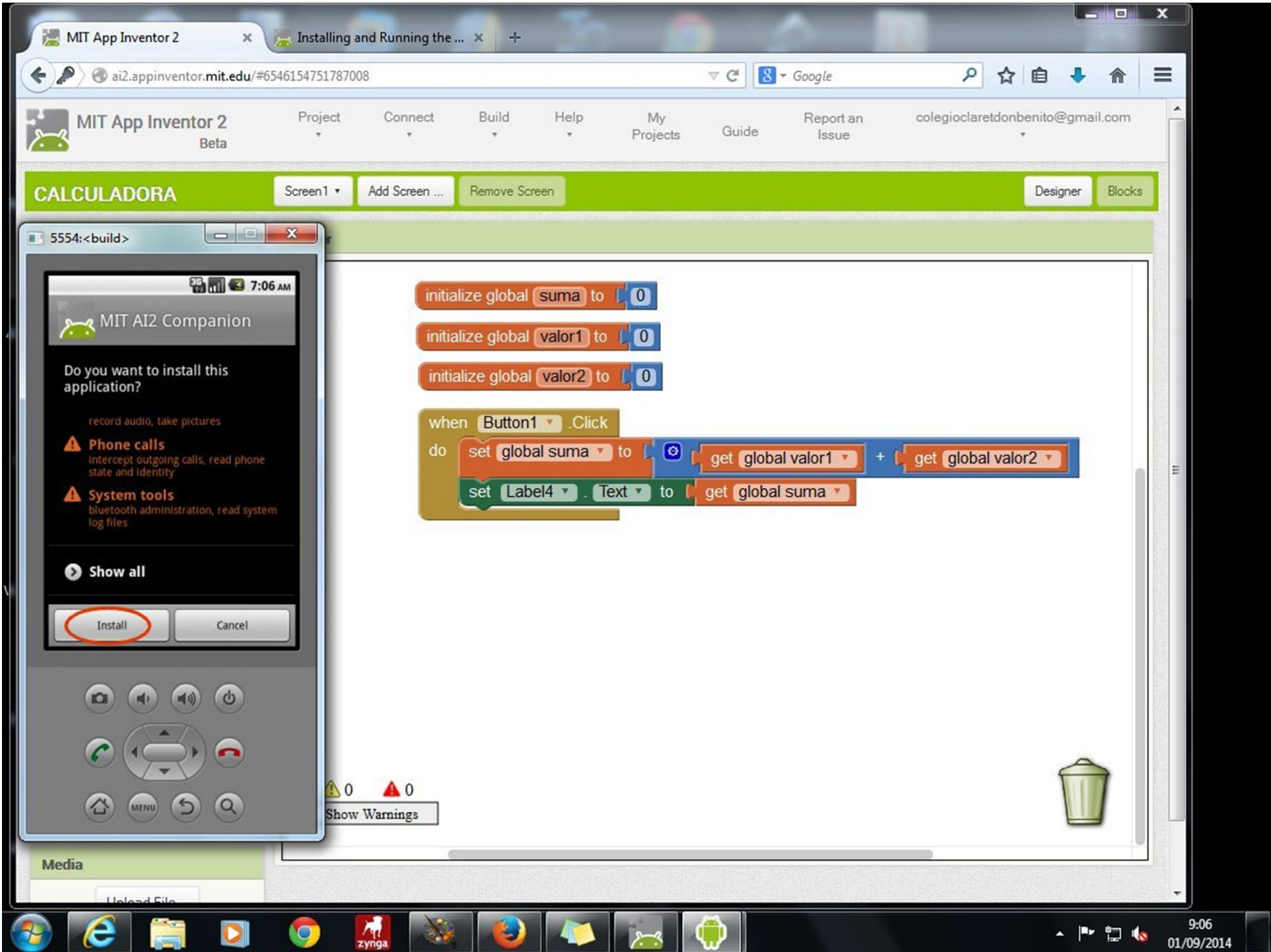
Show Warnings

Media

Upload File

9:06 01/09/2014

ACTUALIZAR EL EMULADOR LA PRIMERA VEZ QUE SE EJECUTE



MIT App Inventor 2

ai2.appinventor.mit.edu/#6546154751787008

MIT App Inventor 2 Beta

Project Connect Build Help My Projects Guide Report an Issue colegioclaretndonbenito@gmail.com

CALCULADORA

Screen1 Add Screen ... Remove Screen Designer Blocks

5554:<build>

MIT AI2 Companion

Application installed

Open Done

initialize global suma to 0

initialize global valor1 to 0

initialize global valor2 to 0

when Button1 .Click

do set global suma to get global valor1 + get global valor2

set Label4 .Text to get global suma

Pulsar Done una vez actualizado

Show Warnings

Media

9:07 01/09/2014

MIT App Inventor 2

ai2.appinventor.mit.edu/#6546154751787008

MIT App Inventor 2 Beta

Project Connect Build Help My Projects Guide Report an Issue colegioclairetdonbenito@gmail.com

CALCULADORA

Screen1 Add Screen ... Remove Screen Designer Blocks

Blocks

- Built-in
 - Control
 - Logic
 - Math
 - Text
 - Lists
 - Colors
 - Variables
 - Procedures
- Screen1
 - Label1
 - Label2
 - TextBox1
 - Label3
 - TextBox2
 - Button1
 - Label4
- Any component

Rename Delete

Media

Upload File


Viewer

```
initialize global suma to 0
initialize global valor1 to 0
initialize global valor2 to 0

when Button1 .Click
do
  set global valor1 to TextBox1 .Text
  set global suma to get global valor1 + get global valor2
  set global suma to
```

Duplicate
Add Comment
Inline Inputs
Collapse Block
Disable Block
Delete 2 Blocks
Help
Do It

0 0 Show Warnings



9:11 01/09/2014

MIT App Inventor 2

ai2.appinventor.mit.edu/#6546154751787008

MIT App Inventor 2 Beta

Project Connect Build Help My Projects Guide Report an Issue colegioclairetdonbenito@gmail.com

CALCULADORA

Screen1 Add Screen ... Remove Screen Designer Blocks

5554:<build>

Screen1

PROGRAMA CALCULADORA

Introduce un número

12

Introduce otro número

18

SUMAR

30

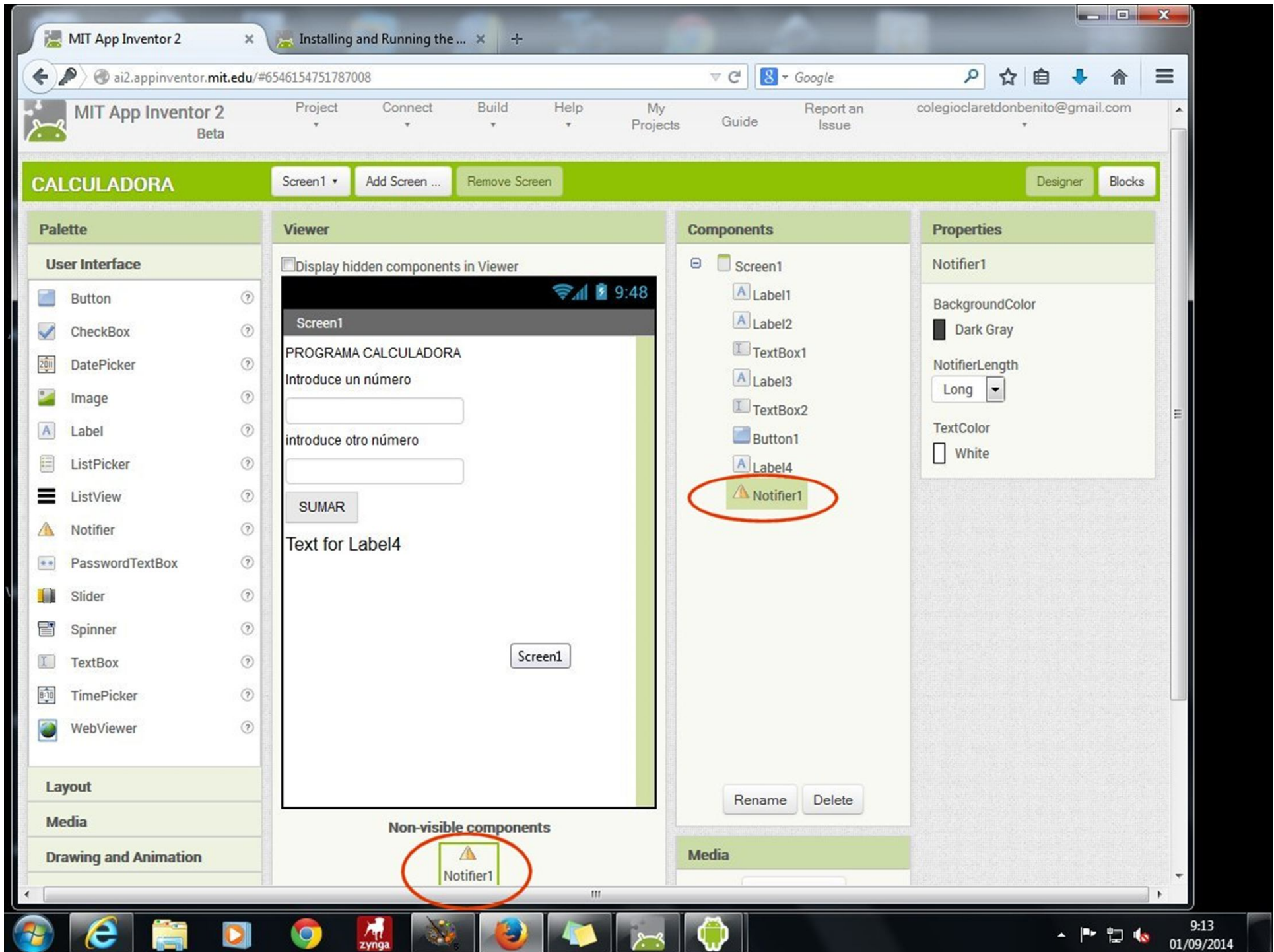
Media

```
initialize global suma to 0
initialize global valor1 to 0
initialize global valor2 to 0

when Button1 .Click
do
  set global valor1 to TextBox1 . Text
  set global valor2 to TextBox2 . Text
  set global suma to get global valor1 + get global valor2
  set Label4 . Text to get global suma
```

Show Warnings

9:12 01/09/2014



MIT App Inventor 2

ai2.appinventor.mit.edu/#6546154751787008

MIT App Inventor 2 Beta

Project Connect Build Help My Projects Guide Report an Issue colegioclairetdonbenito@gmail.com

CALCULADORA

Screen1 Add Screen ... Remove Screen Designer Blocks

Blocks

- Built-in
 - Control
 - Logic
 - Math
 - Text
 - Lists
 - Colors
 - Variables
 - Procedures
- Screen1
 - Label1
 - Label2
 - TextBox1
 - Label3
 - TextBox2
 - Button1
 - Label4
 - Notifier1

Rename Delete

Media

Upload File

Viewer

```
initialize global suma to 0
initialize global valor1 to 0
initialize global valor2 to 0

when Button1 .Click
do
  set global valor1 to TextBox1 .Text
  set global valor2 to TextBox2 .Text
  set global suma to (get global valor1 + get global valor2)
  set Label4 .Text to get global suma
  call Notifier1 .ShowAlert
  notice (join ["El resultado de la suma es: ", get global suma])
```

0 0 Show Warnings

9:14 01/09/2014

MIT App Inventor 2

ai2.appinventor.mit.edu/#6546154751787008

MIT App Inventor 2 Beta

Project Connect Build Help My Projects Guide Report an Issue colegioclairetdonbenito@gmail.com

CALCULADORA

Screen1 Add Screen ... Remove Screen Designer Blocks

5554:<build>

Screen1

PROGRAMA CALCULADORA

Introduce un número

12

Introduce otro número

18

SUMAR

30

El resultado de la suma es:30

```
initialize global suma to 0
initialize global valor1 to 0
initialize global valor2 to 0

when Button1 .Click
do
  set global valor1 to TextBox1 .Text
  set global valor2 to TextBox2 .Text
  set global suma to (get global valor1 + get global valor2)
  set Label4 .Text to get global suma
  call Notifier1 .ShowAlert
  notice (join ["El resultado de la suma es: ", get global suma])
```

Show Warnings

Windows Taskbar: Internet Explorer, File Explorer, Chrome, Zynga, Firefox, Mail, Android, Android

System Tray: 9:15, 01/09/2014

INSTALAR LA APP EN EL MÓVIL

Aula de informática
Colegio Claret

MIT App Inventor 2

ai2.appinventor.mit.edu/#6546154751787008

MIT App Inventor 2 Beta

Project Connect Build Help My Projects Guide Report an Issue colegioclaretndonbenito@gmail.com

CALCULADORA Screen1 Add Screen ... App (provide QR code for .apk) App (save .apk to my computer) Designer Blocks

Blocks

- Built-in
 - Control
 - Logic
 - Math
 - Text
 - Lists
 - Colors
 - Variables
 - Procedures
- Screen1
 - Label1
 - Label2
 - TextBox1
 - Label3
 - TextBox2
 - Button1
 - Label4
 - Notifier1


Viewer

initialize global suma to 0

initialize global valor1 to 0

initialize global

Barcode link for CALCULADORA



OK

Note: this barcode is only valid for 2 hours. See [the FAQ](#) for info on how to share your app with others.

when Bu do set set set set call

valor1 + get global valor2

suma

El resultado de la suma es: "

get global suma

Show Warnings

Media

9:22 01/09/2014

LA App EN EL MÓVIL

Ejemplos sencillos:

- Adivinar un número
- Par o impar
- Enviar texto traducido